



SHEERWEAVE[®]

BY PHIFER

STYLE

7500 / 7500R

7500 - BLACKOUT FABRIC

7500R - RESIDENTIAL
BLACKOUT FABRIC

WEAVING
EXCELLENCE
WITH
INNOVATION



Code	Color	SOLAR OPTICAL PROPERTIES				SHGC/G VALUE	
		TS	RS	AS	TV	<i>SINGLE</i> 1/4 CL	<i>INSULATING</i> 1 HA
STYLE 7500 - BLACKOUT							
R13	Ice	0	68	32	0	0.24	0.20
R22	Midnight	0	68	32	0	0.24	0.20
STYLE 7500R - BLACKOUT							
R44	Ice	0	68	32	0	0.24	0.20
R55	Midnight	0	68	32	0	0.24	0.20



PRODUCT CERTIFIED FOR
LOW CHEMICAL EMISSIONS
UL.COM/GG
UL 2818



MIF Seal of Approval



TS = Solar Transmittance
RS = Solar Reflectance
AS = Solar Absorptance
TV = Visual Transmittance

SHGC = Solar Heat Gain Coefficient

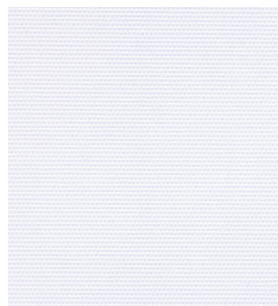
1/4 CL = 1/4" Clear Glass
1 HA = 1" Heat Absorbing Glass

Fabrics Installed Internally
Zero-Degree Profile Angle

For additional performance values, test references and technical definitions visit us at www.phifer.com.

STYLE 7500

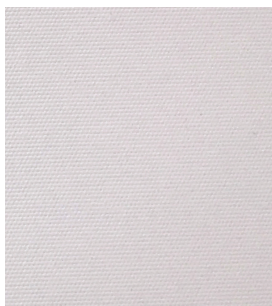
R13 Ice



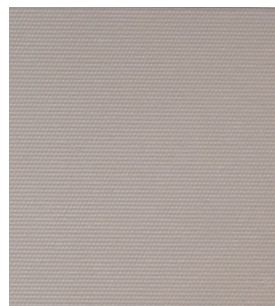
R39 **NEW** Cloud



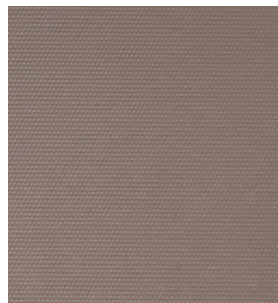
R40 **NEW** Porcelain



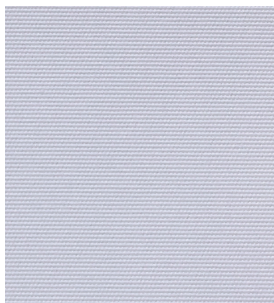
R17 Dune



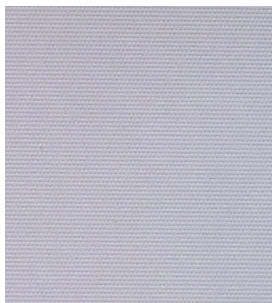
R19 **NEW** Stone



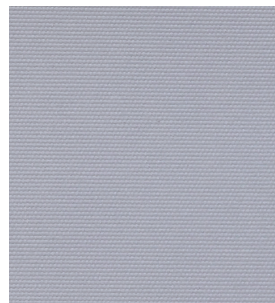
R41 **NEW** Limestone



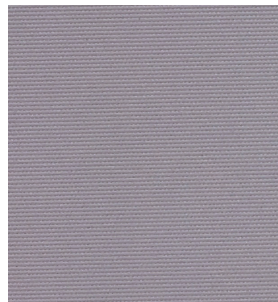
R97 Mist



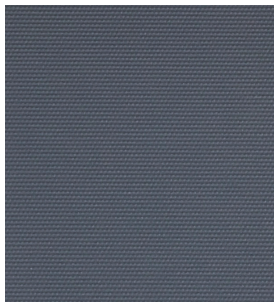
R42 **NEW** Nimbus



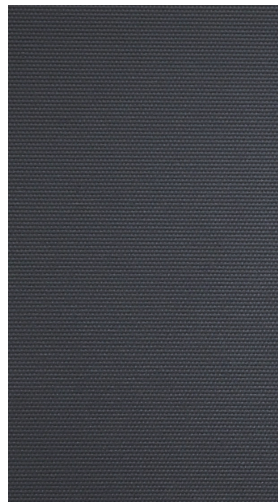
R43 **NEW** Tundra



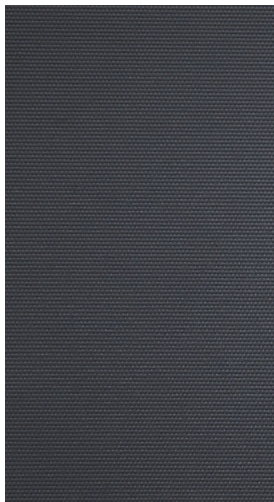
R20 **NEW** Odyssey



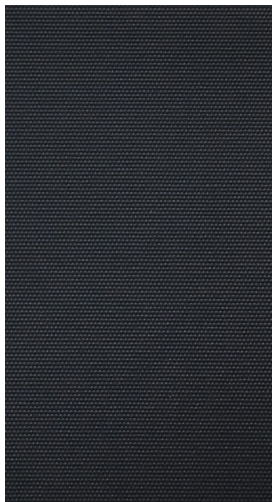
R21 Orient



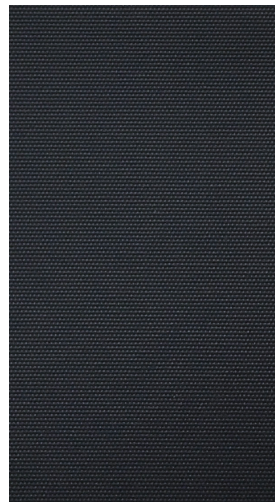
S97 **NEW** Orient x2



R22 Midnight

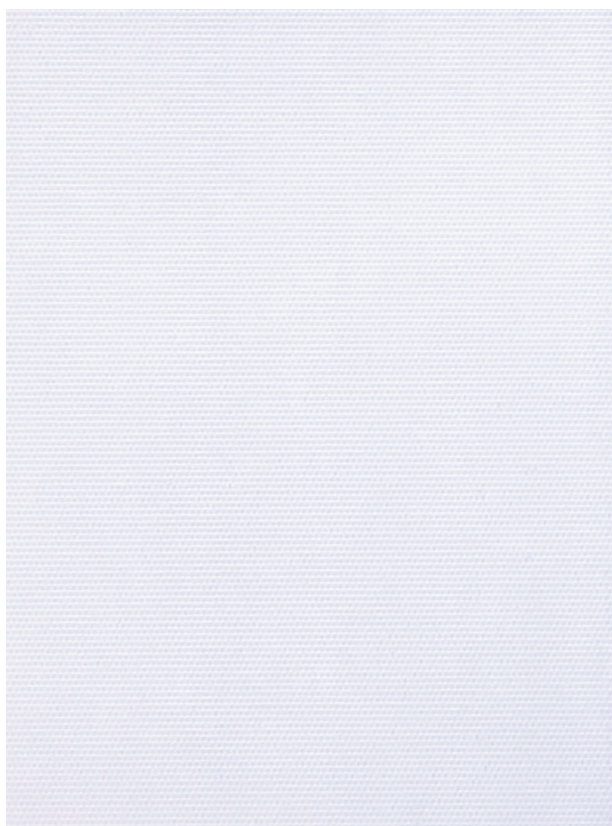


R99 **NEW** Midnight x2



STYLE 7500R RESIDENTIAL **NEW**

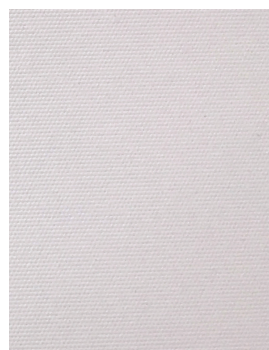
R44 **Ice**



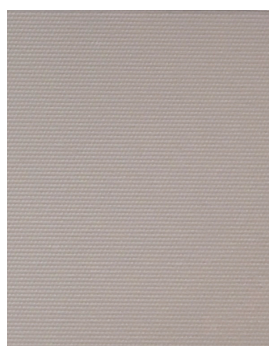
R45 **Cloud**



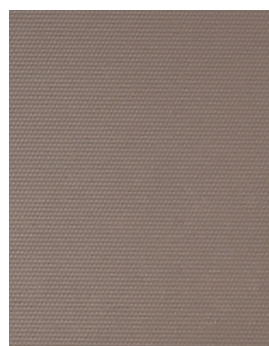
R46 **Porcelain**



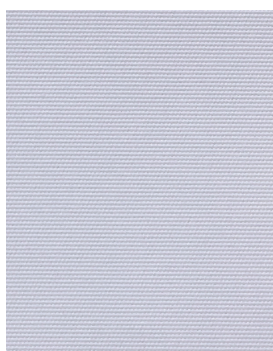
R51 **Dune**



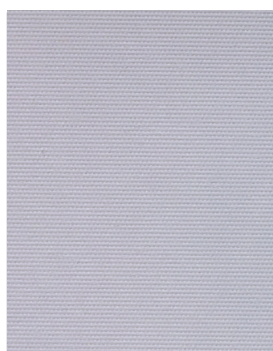
R52 **Stone**



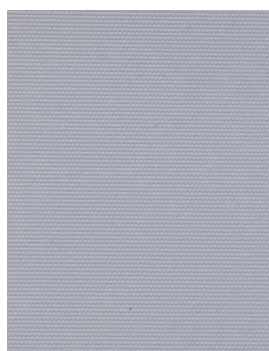
R47 **Limestone**



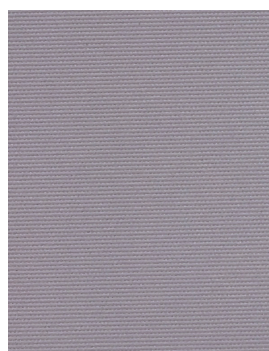
R48 **Mist**



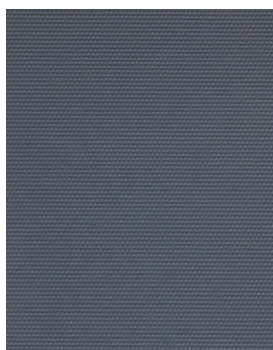
R49 **Nimbus**



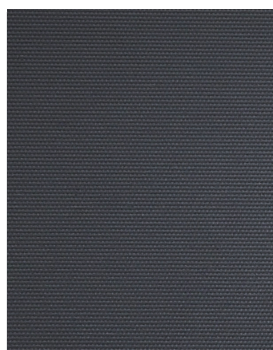
R50 **Tundra**



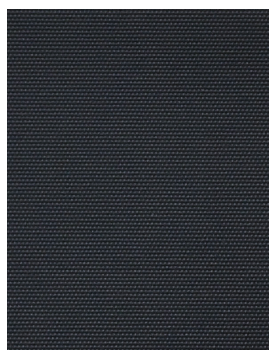
R53 **Odyssey**



R54 **Orient**



R55 **Midnight**



*Colors may vary based on individual computer settings and should only be used for general reference.



 **SHEERWEAVE**
BY PHIFER

STYLE 7500 / 7500R SPECIFICATIONS

This attractive blackout fabric maintains high quality at an economical price. Style 7500 is presented in a classic range of neutral colors with a unique PVC-free composition and is ideal for commercial applications. SheerWeave Style 7500 is an excellent option when total light blockage is needed and all Style 7500 colors have an off-white backing.

New Style 7500R, a companion to the Style 7500 range, maintains the same look and feel as its namesake at substantial cost savings and is designed specifically for residential use where commercial fire certifications are not required.

STYLE 7500 FIRE CLASSIFICATION	California U.S. Title 19 (small scale) CAN/ULC-S 109-03 (large and small scale) BS 5867 Part 2 Type B Performance	NFPA 701 TM#1 (small scale) IBC Section 803.1.1 (Class A Rating) NFPA 101 (Class A Rating)
STYLE 7500R FIRE CLASSIFICATION	California Technical Bulletin 117E NFPA 101 (Class A Rating)	
BACTERIA AND FUNGAL RESISTANCE	ASTM E 2180	ASTM G21
ENVIRONMENTAL CERTIFICATION	GREENGUARD	GREENGUARD Gold
	Certified to these standards for low chemical emissions into indoor air during product usage	
LEAD FREE	RoHS/Directive 2002/95/EC ANSI/WCMA A 100.1-2007 for lead content US Consumer Product Safety Commission Section 101	
WARRANTY	5-year interior	
ACOUSTICAL PERFORMANCE	NRC (Noise Reduction Coefficient) and SAA (Sound Absorption Average) tested in accordance with ASTM C423-09a	
UV PROTECTION	Seal of Approval by the Melanoma International Foundation (MIF) for effectiveness in preventing sun damage to the skin or eyes	
CLEANING INSTRUCTIONS	Fabric should be regularly dusted/vacuumed as appropriate. If commercial spot cleaners are used, they must first be tested and allowed to dry on an inconspicuous area to ensure compatibility.	
	<i>Railroading this fabric is not recommended. Colors may vary slightly from swatch samples. All variations are within industry standards.</i>	

STYLE	7500	7500R
WIDTHS	118" 300 cm	118" 300 cm
ROLL LENGTH	30 Linear Yards 27.4 m	30 Linear Yards 27.4 m
COMPOSITION	100% Polyester with Acrylic Coating	100% Polyester with Acrylic Coating
MESH WEIGHT	12.14 oz/yd ² 412 g/m ²	12.14 oz/yd ² 412 g/m ²
FABRIC THICKNESS	0.014 in 0.356 mm	0.014 in 0.356 mm
OPENNESS FACTOR	Opaque	Opaque
ACOUSTICAL VALUE	NRC .00 / SAA .03	NRC .00 / SAA .03

PHIFER
INCORPORATED

P. O. Box 1700 • Tuscaloosa, Alabama 35403 -1700 USA
Phone: 205.345.2120 • FAX: 205.391.0799
Toll Free USA/Canada: 1.800.221.5497
phifer.com • ISO Registered



© SheerWeave is a registered trademark of PHIFER INCORPORATED.
™ UL, the UL logos and the UL mark are trademarks of UL LLC.
Photo courtesy of Hunter Douglas, South America.
© PHIFER INCORPORATED V18 3033844