

PHIFER

EXTERIOR SUN CONTROL
FABRIC

SOLAR INSECT
SCREENING

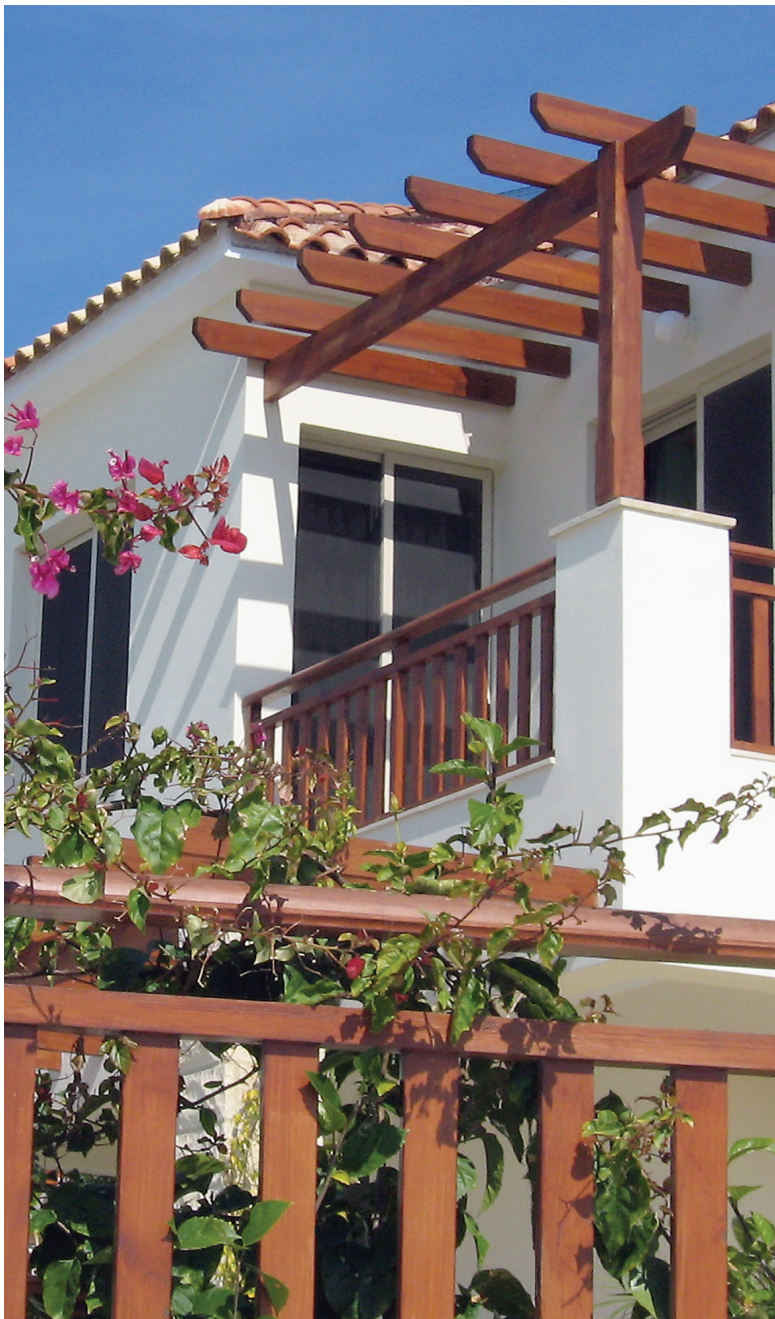
WEAVING
EXCELLENCE
WITH
INNOVATION



Solar Insect Screening

BY PHIFER

SOLAR OPTICAL PROPERTIES				SHGC/G VALUE g-tot (glass & blind)					
				SINGLE			INSULATING		
Color	TS	RS	AS	1/8 CL	1/4 CL	1/4 HA	1/2 CL	1 CL	1 HA
SOLAR INSECT SCREENING 30 Degree Profile Angle • Fabrics Installed Externally									
Charcoal	28	5	67	0.32	0.31	0.30	0.27	0.26	0.23
SOLAR INSECT SCREENING 75 Degree Profile Angle • Fabrics Installed Externally									
Charcoal	8	10	82	0.15	0.15	0.15	0.10	0.10	0.10



PRODUCT CERTIFIED FOR
LOW CHEMICAL EMISSIONS
UL.COM/GG
UL 2818



TS = Solar Transmittance
RS = Solar Reflectance
AS = Solar Absorptance
TV = Visual Transmittance

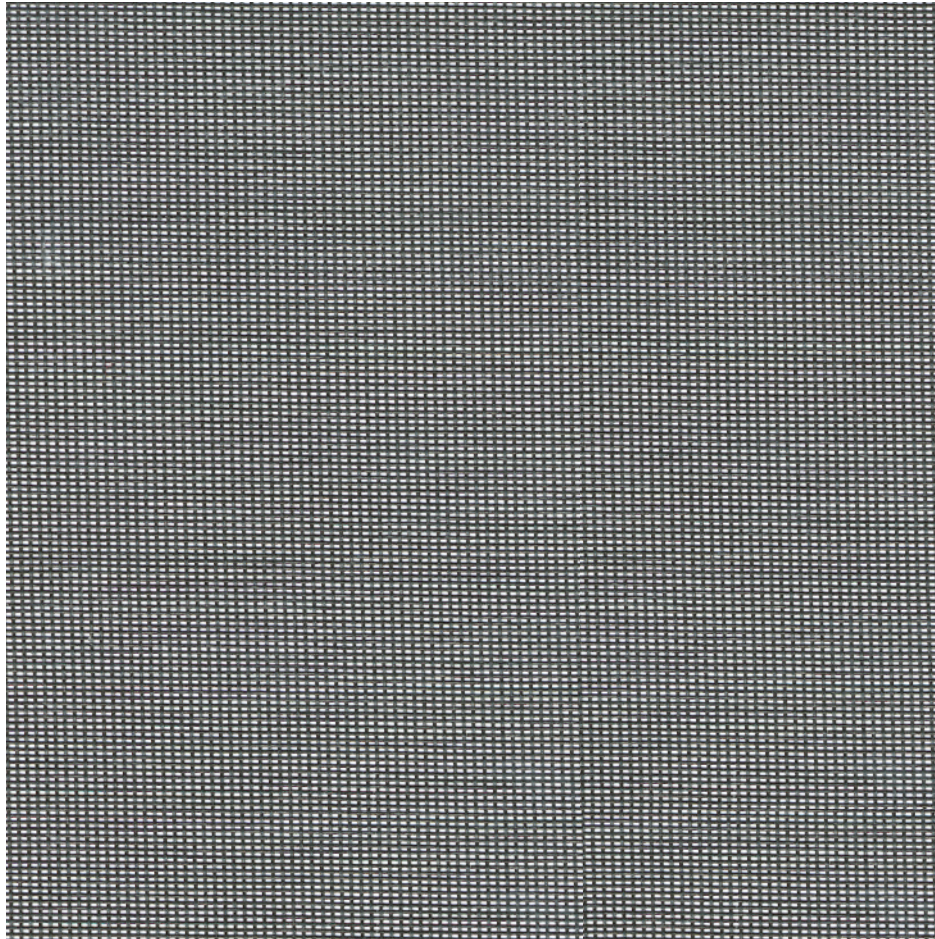
SHGC = Solar Heat Gain Coefficient

1/8 CL = 1/8" Clear Glass
1/4 CL = 1/4" Clear Glass
1/4 HA = 1/4" Heat Absorbing Glass
1/2 CL = 1/2" Insulating Clear Glass
1 CL = 1" Insulating Clear Glass
1 HA = 1" Insulating Heat Absorbing Glass

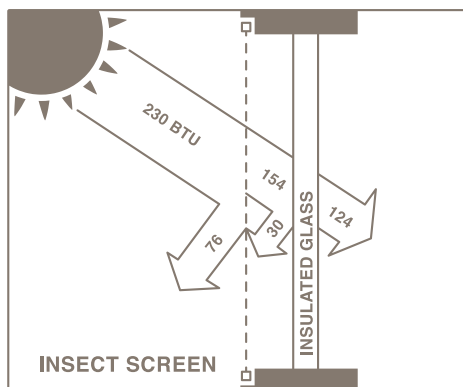
The solar optical properties are used to calculate the solar heat gain coefficient (SHGC). The SHGC represents the percentage of solar heat gain that is transmitted to the interior through the glass and shading system. Dark colors provide maximum glare reduction and visibility.

For additional performance values, test references and technical definitions visit us at www.phifer.com.

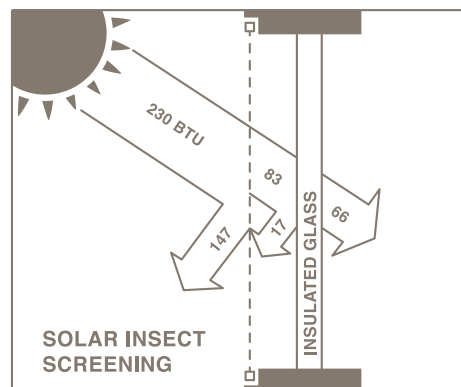
Charcoal



*Colors may vary based on individual computer settings and should only be used for general reference.



Regular Fiberglass Insect Screening offers about 30% shading.



PHIFER SOLAR INSECT SCREENING blocks up to 65% of the sun's hot rays.

SOLAR INSECT SPECIFICATIONS

Phifer Solar Insect Screening offers the ultimate in insect protection while at the same time stopping up to 65% of the sun's heat and glare. This fabric also improves daytime privacy while offering excellent outward visibility. Phifer Solar Insect Screening works whether windows are open or closed.

ENVIRONMENTAL CERTIFICATION	GREENGUARD GREENGUARD Gold Certified to these standards for low chemical emissions into indoor air during product usage
LEAD FREE	RoHS/Directive 2002/95/EC ANSI/WCMA A 100.1-2007 for lead content US Consumer Product Safety Commission Section 101 REACH (EC 1907/2006) compliant
WARRANTY	10-year exterior

SOLAR INSECT

WIDTHS	36", 48", 60", 72", 84" and 96" 91.4 cm, 121.9 cm, 152.4 cm, 182.9 cm, 213.4 cm and 243.8 cm
ROLL LENGTH	100 Linear Feet 30.48 m
COMPOSITION	37% Fiberglass 63% Vinyl on Fiberglass
MESH WEIGHT	7.0 oz/yd ² 235.6 g/m ²
FABRIC THICKNESS	0.015 in 0.381 mm
OPENNESS FACTOR	Approximately 32%
UV BLOCKAGE	Approximately 68%



P. O. Box 1700 • Tuscaloosa, Alabama 35403 -1700 USA
Phone: 205.345.2120 • FAX: 205.391.0799
Toll Free USA/Canada: 1.800.221.5497
phifer.com • ISO Registered



™ UL, the UL logos and the UL mark are trademarks of UL LLC.
© PHIFER INCORPORATED V18 3009042