



STYLE  
1000

---

WEAVING  
EXCELLENCE  
WITH  
INNOVATION



Code	Color	SOLAR OPTICAL PROPERTIES				SHGC/G VALUE g-tot (glass & blind)	
		TS	RS	AS	TV	SINGLE	
		1/4 CL	1/4 HA				
<b>STYLE 1000 - 25%</b>							
P02	White	36	50	14	31	0.42	0.35
P03	Antique White	37	47	16	32	0.44	0.36



PROTECTION THAT LIVES ON   
**MICROBAN**<sup>®</sup>

Microban<sup>®</sup> antimicrobial protection inhibits the growth of stain-causing bacteria, mold and mildew on the shade.



PRODUCT CERTIFIED FOR  
 LOW CHEMICAL EMISSIONS  
 UL.COM/GG  
 UL 2818



TS = Solar Transmittance  
 RS = Solar Reflectance  
 AS = Solar Absorptance  
 TV = Visual Transmittance

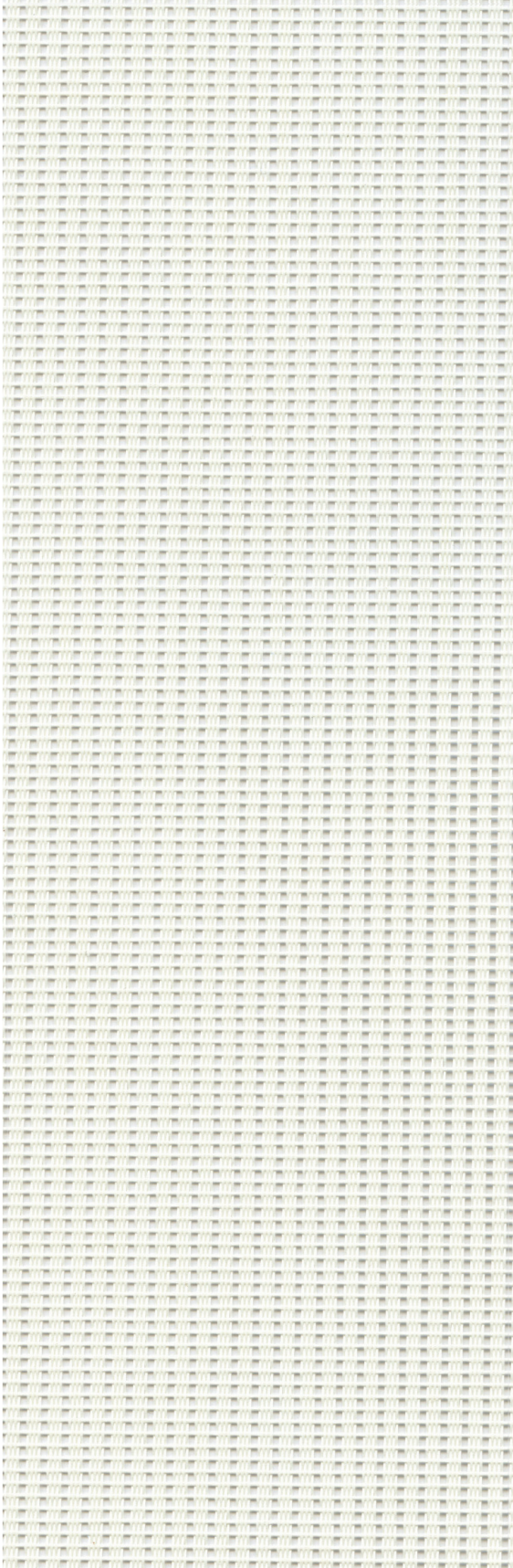
SHGC = Solar Heat Gain Coefficient

1/4 CL = 1/4" Clear Glass  
 1/4 HA = 1/4" Heat Absorbing Glass

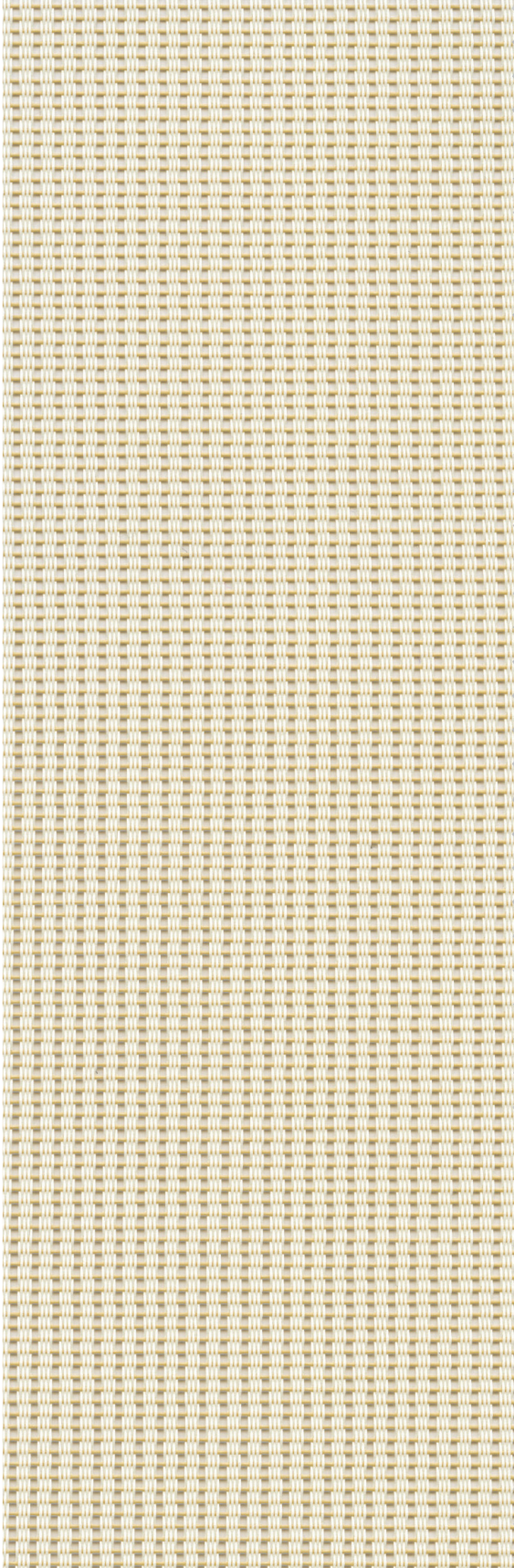
Fabrics Installed Internally  
 Zero-Degree Profile Angle

For additional performance values, test references and technical definitions visit us at [www.phifer.com](http://www.phifer.com).

P02 White



P03 Antique White



\*Colors may vary based on individual computer settings and should only be used for general reference.

# STYLE 1000 SPECIFICATIONS

This vinyl coated fiberglass ribbed-weave fabric offers substantial shading and excellent outward visibility with improved day-time privacy. Style 1000 can also be used in exterior shading systems.

<b>FIRE CLASSIFICATION</b>	California U.S. Title 19 (small scale) NFPA 101 (Class A Rating) BS 5867 Part 2 Type B Performance CAN/ULC-S 109-03 (large and small scale)	NFPA 701 TM#1 (small scale) IBC Section 803.1.1 (Class A Rating) NFPA 701 TM#2 (large scale)
<b>BACTERIA AND FUNGAL RESISTANCE</b>	ASTM E 2180 GREENGUARD Mold and Bacteria Standard ASTM 6329 includes Microban antimicrobial additives	ASTM G21 AATCC30 Part 3 ASTM D 3273
<b>ENVIRONMENTAL CERTIFICATION</b>	GREENGUARD Certified to these standards for low chemical emissions into indoor air during product usage	GREENGUARD Gold
<b>LEAD FREE</b>	RoHS/Directive 2002/95/EC ANSI/WCMA A 100.1-2007 for lead content US Consumer Product Safety Commission Section 101	REACH (EC 1907/2006) compliant
<b>WARRANTY</b>	10-year interior	5-year exterior
<b>TRACKLESS</b>	TrackLess Technology minimizes the fiberglass yarns' inherent tendencies to track when being rolled up in a shade. With TrackLess Technology these same fabrics now track less, roll up straighter and reduce shade fabrication time.	

## STYLE 1000

---

<b>WIDTHS</b>	36", 48", 72", 84" and 96" 91.4 cm, 121.9 cm, 182.9 cm, 213.4 cm and 243.8 cm
<b>ROLL LENGTH</b>	30 Linear Yards 27.4 m
<b>COMPOSITION</b>	35% Fiberglass 65% Vinyl on Fiberglass
<b>MESH WEIGHT</b>	8.8 oz/yd <sup>2</sup> 298 g/m <sup>2</sup>
<b>FABRIC THICKNESS</b>	0.020 in 0.51 mm
<b>OPENNESS FACTOR</b>	Approximately 25%
<b>UV BLOCKAGE</b>	Approximately 75%

**PHIFER**  
INCORPORATED

P. O. Box 1700 • Tuscaloosa, Alabama 35403 -1700 USA  
Phone: 205.345.2120 • FAX: 205.391.0799  
Toll Free USA/Canada: 1.800.221.5497  
phifer.com • ISO Registered



© SheerWeave is a registered trademark of PHIFER INCORPORATED.  
© MICROBAN is a registered trademark of Microban Products Company.  
™ UL, the UL logos and the UL mark are trademarks of UL LLC.  
Photo courtesy of UNIFLEX WINDOW FASHIONS, Sao Paulo, Brazil.  
© PHIFER INCORPORATED V17 3033830