

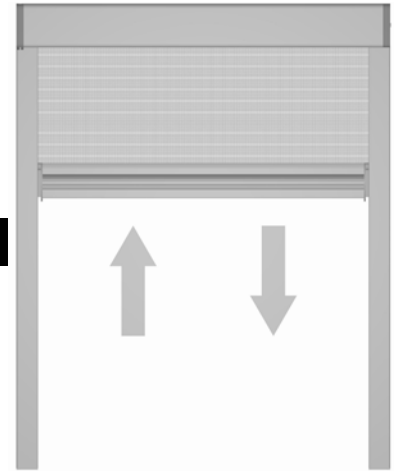
# Roll-Away®

The Disappearing Window Screen

Form: RAW2M  
Rev: 11/003/05  
Page 1

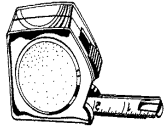
## Series 4000

### Installation Instructions



**IMPORTANT: REVIEW ALL INSTRUCTIONS THOROUGHLY BEFORE STARTING STEP 1**

#### Tools Required



Tape Measure



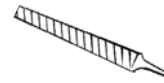
Drill Motor &  
1/8" Drill Bit



Phillips Head  
Screwdriver



Pencil or  
Scriber



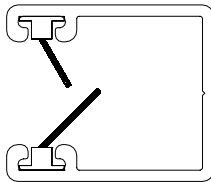
File



Scissor



Utility Knife



R2040 with Meshlock™ installed



R4060 and R4070 left and right  
Guide Locks  
With R4280 magnets installed



Partially Assembled Unit

#### Parts Included



Flat Head Screw  
#6 x 3/4"

#### Step 1

#### Verify Part Lengths Required

R2040 guides should measure the opening height minus 1 15/16".

The completed canopy assembly should measure the opening width minus 1/16".

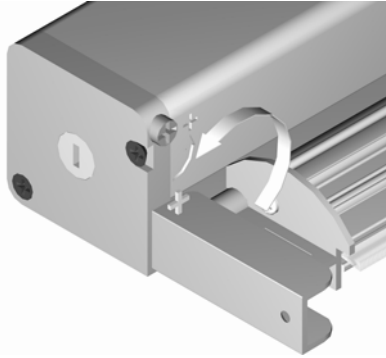
Note: The Meshlock™ can obscure the guide locks and canopy end cap guide runners. A 1" wide, 8" long piece of thin cardboard folded in the middle can be inserted into the guide channel to make the bottom of the channel visible.



Cardboard  
Spreader

**Step 2****Test the screen for operation, and pretension the screen**

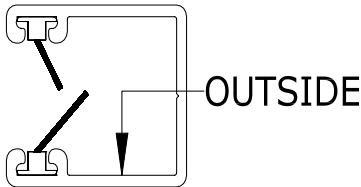
The Roll-Away® window screen was shipped with a minimal amount of tension on the screen. Test the tension on the screen by holding the canopy horizontally, withdrawing the screen from the canopy, and allowing it to retract, taking care to keep the screen within the canopy end cap guide runners. If the screen does not fully retract, add tension to the spring by engaging the tension adjustment screw with a #2 Phillips bit and turning the tension adjustment screw counterclockwise. It will require 30 turns of the tension adjustment screw to add one turn of tension to the spring. Add just enough tension to keep the drawbar against the canopy as shown.

**! CAUTION !**

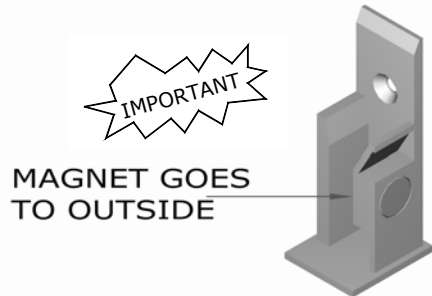
Over tensioning the spring will destroy it and void the product warranty.

**Step 3****Install guide locks in guides.**

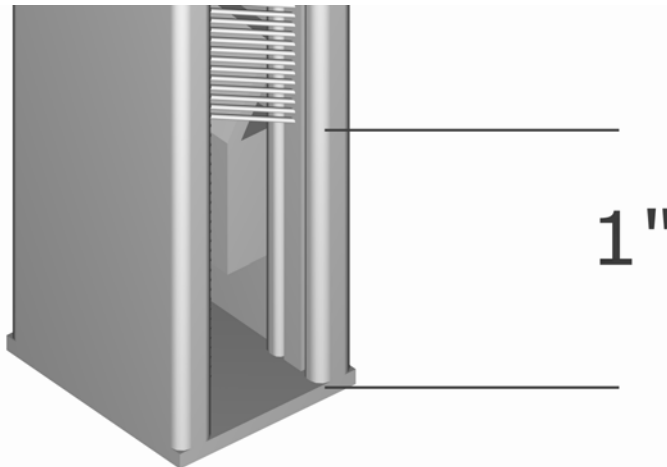
Locate the guides (R2040) Note that the Meshlock™ has long brushes and short brushes. The long brushes go to the outside of your building. Remove the Meshlock™ retaining wrap (white string) at this time.



Locate the guide locks (R 4060 and R4070) and install them in the guides (R2040), insuring they are seated all the way to the bottom flange. The magnet goes to the outside of your building.

**Step 4****Trim the Meshlock™ at the magnets.**

If the guide locks are installed correctly, the Meshlock™ long brushes cover the magnets in the guide locks. To insure proper operation of the magnetic latch, the long brush must be trimmed away at the magnet. Using a utility knife or scissors, cut the long brush away for a distance of 1 inch, from the bottom of the guide. Repeat for both guides.



**Step 5****Assemble guides to canopy.**

Preassemble the **Roll-Away®** screen on the floor or other flat surface. Slide the guides (R2040) onto the canopy end cap guide runners, with the openings facing each other. Make sure they are placed on the correct sides of the canopy. The guide locks must be installed on the correct side of the canopy to operate.

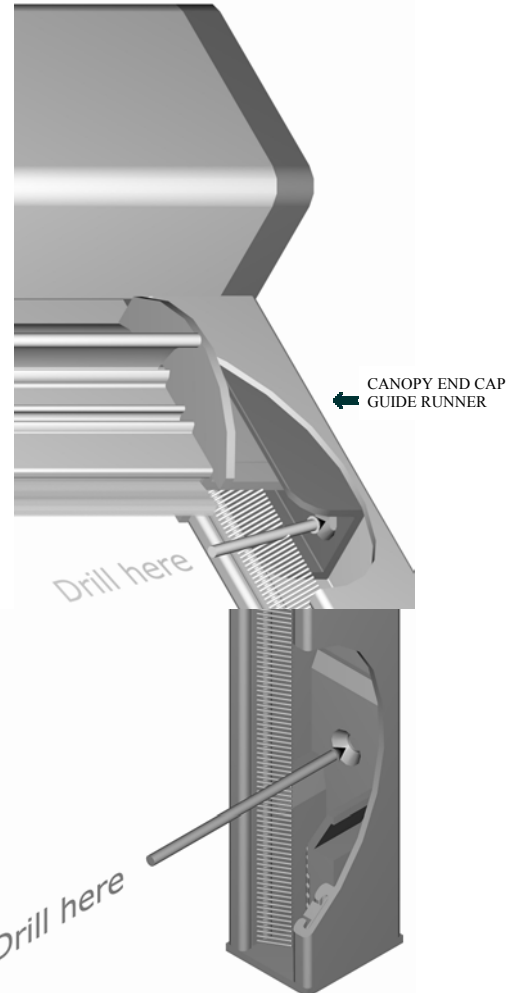
**Step 6****Place assembled unit into window opening.**

Lift the assembled **Roll-Away®** screen by the guides (R2040) and place into the window frame. Do not bend the canopy end cap guide runners or excessive stress could cause damage. To allow proper operation of the screen (and window) there should be at least 1/8" clearance between the **Roll-Away®** screen and the window frame. **Make sure the Roll-Away® is properly aligned and square in the opening. It is particularly important that the guides are parallel.**

**Step 7****Fasten canopy to window frame.**

After checking for proper alignment, fasten the canopy end cap guide runners and the top of each guide to the window frame. Using the 1/8" drill bit, from the guide channel opening locate the countersunk hole in the canopy end cap guide runner and drill through the guide. (Note: Do not penetrate the wood deeper than 1/8" or the screw will not hold.) Use the #6 flat head screws provided to fasten the canopy and guides in place.

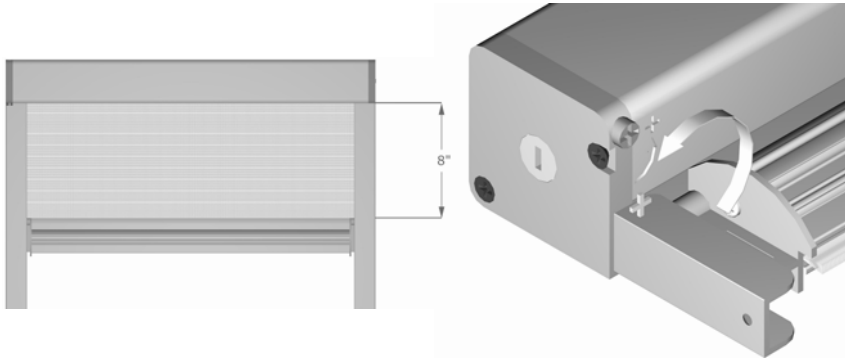
**! CAUTION !** Care must be taken to avoid hitting the drawbar with the drill.

**Step 8****Fasten guide locks to window frame.**

After checking for proper alignment, fasten the guide locks and the bottom of each guide to the window frame. Using the 1/8" drill bit, from the guide channel opening locate the countersunk hole in the guide lock and drill through the guide. (Note: Do not penetrate the wood deeper than 1/8" or the screw will not hold.) Use the #6 flat head screws provided to fasten the guide locks and guides in place.

## Step 9 Tension the screen and test the screen for operation.

Tension the **Roll-Away®** window screen by drawing the screen out of the canopy approximately 8" and add tension to the spring by engaging the tension adjustment screw with a #2 Phillips bit and turning the tension adjustment screw counterclockwise. Test the tension on the screen by drawing the screen all the way to the guide locks and releasing. If the screen is tensioned properly, it should retract all the way to the canopy and just touch it. If it hits the canopy with force, there is too much tension and some will have to be relieved by turning the tension adjustment screw clockwise. If there is still insufficient tension, repeat tensioning procedure as necessary.



### ! CAUTION !

Over tensioning the spring will destroy it and void the product warranty.

## Installation Complete

Make sure all components are properly installed. Check the overall operation of the **Roll-Away®** window screen. The drawbar end caps should move freely in the guides and engage the guide locks.

## LIMITED WARRANTY

To the original purchaser, R. Lang Company warrants this product and its components parts to be free of defects on materials and workmanship for a period of one year from the date of purchase.

Damage caused by accident, improper installation or abuse, is specifically excluded from this warranty.

Manufacturer's liability on any claim shall not exceed the cost of the product. In no instance shall manufacturer be responsible for consequential damage from the use of this product, including damage to existing door during installation or operation.

## 1 Year

For a period of one (1) year from the date of purchase, any defective product or part may be sent, freight prepaid, to R. Lang Company, 8240 West Doe Avenue, Visalia, California (93291) for replacement or repair at no charge. Proof of purchase date and a preapproved Return Materials Authorization must accompany any returned item. For further information about this warranty, write to Consumer Affairs Manager at R. Lang Company.

This warranty replaces any and all previous warranties, either written, oral, or implied, and is the only warranty made on this product by the R. Lang Company. This warranty gives you specific legal rights. Rights may vary from state to state.